

## ISBNPA2024 Latest news, Carbon Footprint report

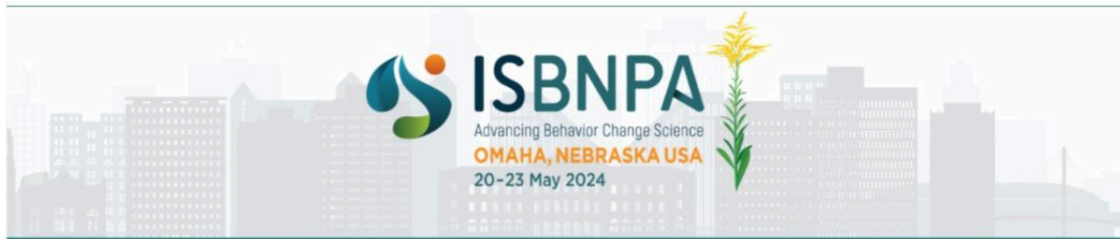
1 message

ISBNPA <antoniopalmeira@isbnpa.ccsend.com>  
Reply-To: socialmedia@isbnpa.org  
To: executivedirector@isbnpa.org

Thu, Apr 25, 2024 at 11:13 AM



E-blast



### ISBNPA2024 Setting up the last details

The dedicated team at ISBNPA is diligently finalizing the details for the Annual Meeting set to take place in Omaha from May 20-23, 2024.

Today, we are thrilled to spotlight our 'One to Watch' invited speakers. The ISBNPA community has handpicked these esteemed colleagues as rising luminaries in the fields of behavioral nutrition and physical activity science.

These engaging plenary sessions promise to provide valuable insights from some of the most promising research and influential figures in our field. We strongly encourage you to mark these sessions on your calendars so you don't miss out on these enriching learning opportunities.

**Emily Tomayko | Laura Balis | Adewale Oyeyemi  
Chelsea Singleton | Jenna Hollis | Neha Rathi**

### You can still sign up to the Workshops

The pre-conference workshops (Morning May 20) provide an immersive, in-depth learning experience on one of the topics below. Even if you've already registered, it's not too late to sign up for a workshop. Simply return to the registration page (you can use your registration confirmation email), log in using your personal details, and add the workshop you wish to attend.

- Using a World Cafe Approach of Community Engagement to Address Socioeconomic Inequalities in Cancer Prevention and Management
- Challenges and Opportunities to the Design, Implementation, Evaluation, and Scale-Up of Digital Interventions Targeting Children and Families: A Multiple Case Study Perspective
- Apps, Portals, and Platforms: Leveraging Technology to Advance Behavioral and Community Health Research – the Good, the Bad and the Ugly in Developing and Rolling out Health Technologies
- Navigating Process Evaluation in Participatory Research

More details about these workshops [[Pre-Conference Workshops – ISBNPA 2024](#)]



## Gala Dinner

Join nearly 150 of your colleagues who have already registered for the gala dinner - a social highlight of the annual ISBNPA meetings. This year, ISBNPA has reduced the price of the gala to further encourage networking (and physical activity through dancing). Don't miss this opportunity, make sure to register for this event.

Follow the same registration procedure outlined above for the workshops to sign up for the gala dinner, even if you are already registered for the meeting.

## CO<sub>2</sub>e for ISBNPA2024

While we will be able to make more accurate calculations only after the conclusion of ISBNPA2024, we are optimistic about significantly reduced CO<sub>2</sub>e emissions associated with this conference compared to the previous year. We anticipate both total and per capita emissions to be substantially lower, thanks to the concerted efforts of the entire ISBNPA community.

| 2023 | 2024 preliminary data |  
 Annual Meeting Total Emissions | 1715 | 250 tCO<sub>2</sub>e |  
 Per Capita Emissions | 1.62 | 0.66 tCO<sub>2</sub>e |

## ISBNPA CO<sub>2</sub>e Carbon Footprint Report 2023

Building on the previous point, ISBNPA has unveiled the following infographic that illustrates the projected 2023 Carbon Footprint of all our activities. As part of our strategic plan, the Carbon Action Committee is deeply committed to identifying, quantifying, and mitigating our greenhouse gas emissions.

To access the full infographic click on the image below.



## Building Future Leaders Program launch

The Growing the Next Generation, a key initiative of the ISBNPA Strategic Plan, is excited to announce that the pilot of the Building Future Leaders Program will be attended by 22 mid-career researchers from around the globe.

The program curriculum will undergo rigorous testing with these esteemed colleagues. Our goal is not only to learn from their experiences and feedback but also to refine our program based on these insights. We aim to roll out an improved version of the program next year for the entire ISBNPA community.



## IRPD - ISBNPA Research Projects Directory

Under the auspices of the Impact Strategic Plan Initiative, we are excited to introduce a comprehensive directory of research projects spearheaded by members of the ISBNPA. This directory is designed to enhance the visibility and dissemination of these research projects, facilitating improved communication and yielding a higher impact. Furthermore, it provides an opportunity for you to connect with other members – a chance to "meet your neighbors."

The first four projects in this directory are [[SEE THE WEBPAGE HERE](#)]:

1. Fathers & Families
2. YoPA
3. INDEEP
4. ACTIVE CLASS study

One such initiative is [INDEEP, which is currently inviting applications for PhD scholarships as part of the Marie S. Curie Doctoral Network](#). This program offers an

opportunity to study the determinants of physical activity behavior among European adolescents. Students from across the globe are eligible to apply for these scholarships. For more detailed information, please follow this link.

If you are involved in a project and would like to publicize it, kindly fill out this [\[FORM\]](#). We will feature your project on our website and promote it through our social media platforms to our extensive community of over 10,000 members.

## ISBNPA Webinars

The spring season of the ISBNPA webinar is ongoing.

Watch all the recordings on our [\[YouTube Channel\]](#).

**Title:**

SIG Policies and Environments SIG, Overview of ISBNPA 2024 Pre-Conference Workshops

Registration:

<https://isbnpa.org/sig/april-30-2024-2000-utc-isbnpa-webinar-policies-and-environment-sig-overview-of-isbnpa-2024-pre-conference-workshops/>

**When:**

April 30, 2024, 2000 UTC

**Title:**

SIG Early Care and Education: Reducing food waste where children live, learn and play: Future directions for policy and practice in high and middle-income countries

Registration:

<https://isbnpa.org/sig/may-14-2024-1100-utc-isbnpa-ecce-sig-webinar-reducing-food-waste-where-children-live-learn-and-play-future-directions-for-policy-and-practice-in-high-and-middle-income-countries/>

**When:**

May 14, 2024, 1100 UTC

Be updated of all ISBNPA news  
Stay Tuned at



International Society of Behavioral Nutrition and Physical Activity | [www.isbnpa.org](http://www.isbnpa.org), 1300 S. 2nd St, Suite 300, Minneapolis, MN 55454

Unsubscribe [executivedirector@isbnpa.org](mailto:executivedirector@isbnpa.org)

Update Profile | Constant Contact Data Notice

Sent by [antoniopalmeira@isbnpa.ccsend.com](mailto:antoniopalmeira@isbnpa.ccsend.com) powered by



Try email marketing for free today!